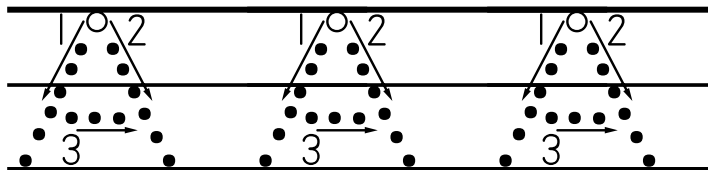
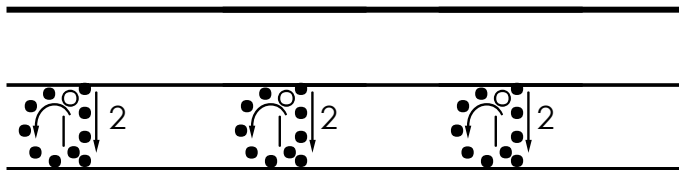


Trace each letter.



Trace each letter.



Practice writing each letter.

Blank handwriting lines for practicing the letter 'a'. Each set consists of a solid top line, a dotted middle line, and a solid bottom line.

Practice writing each letter.

Blank handwriting lines for practicing the letter 'i'. Each set consists of a solid top line, a dotted middle line, and a solid bottom line.